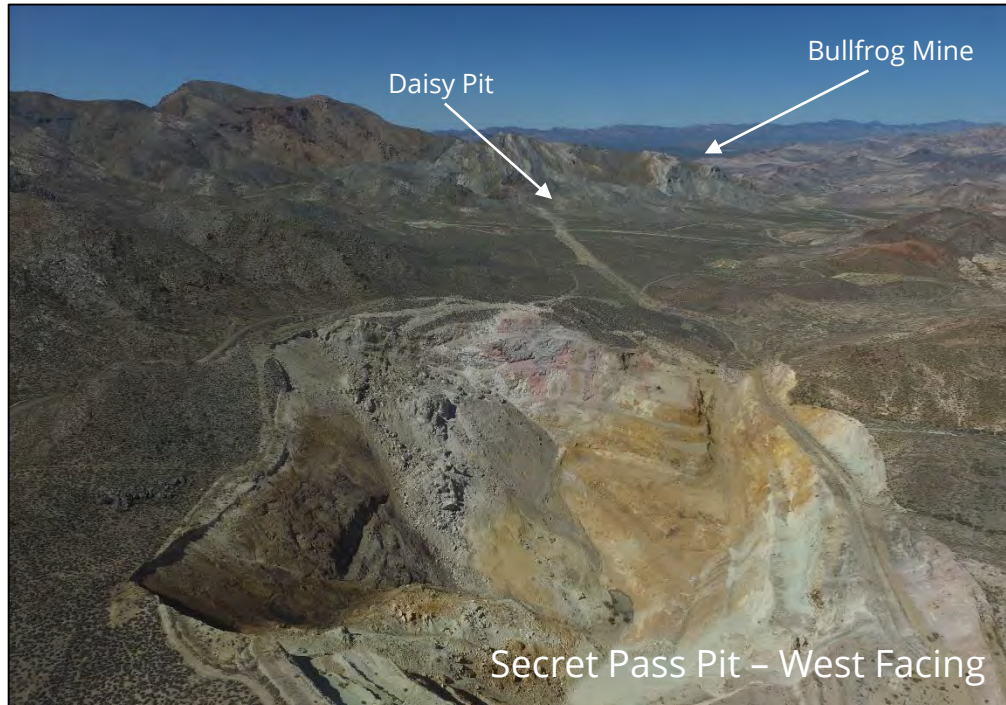
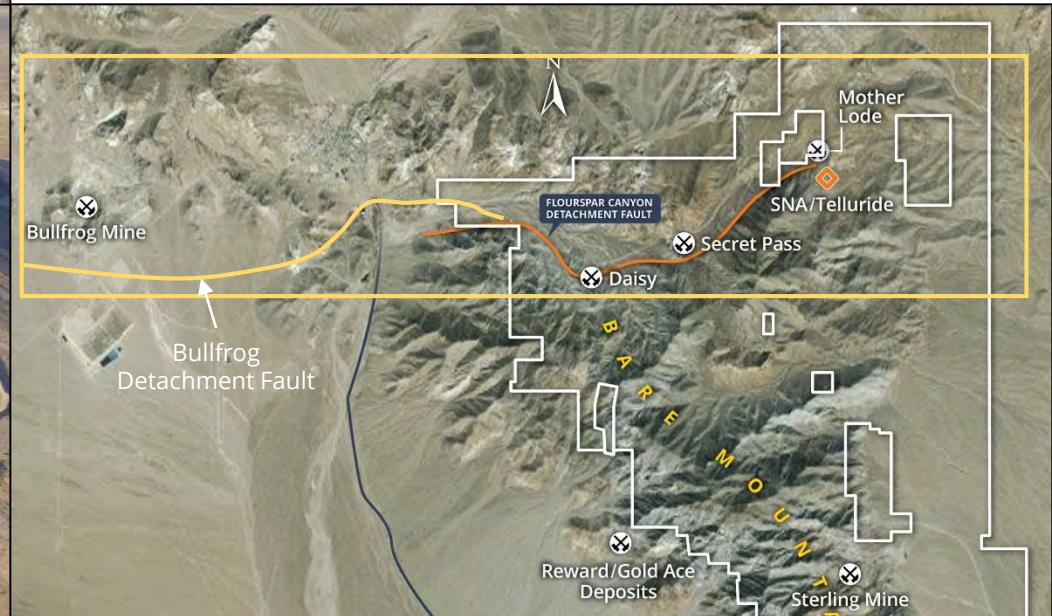
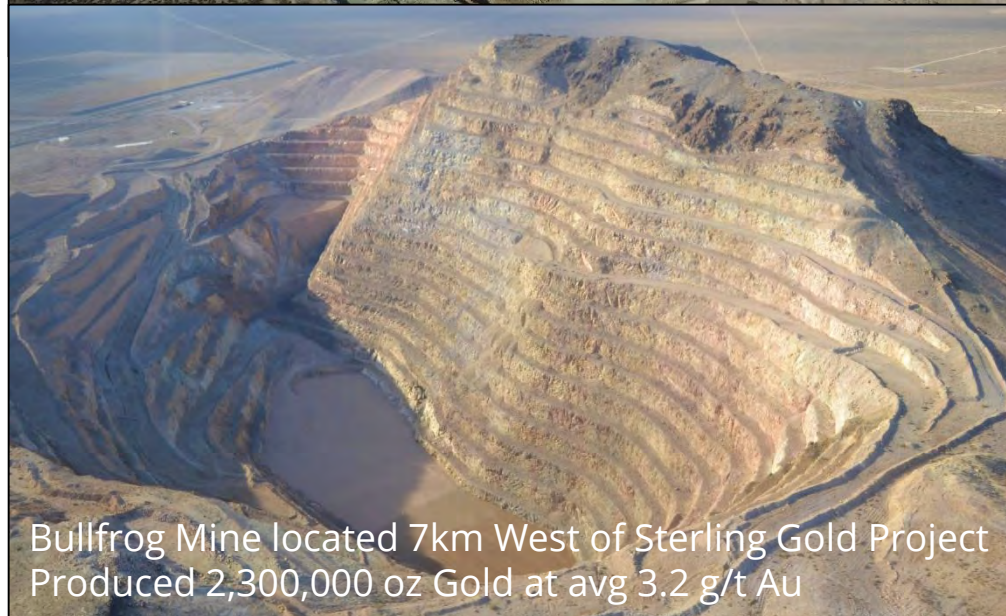


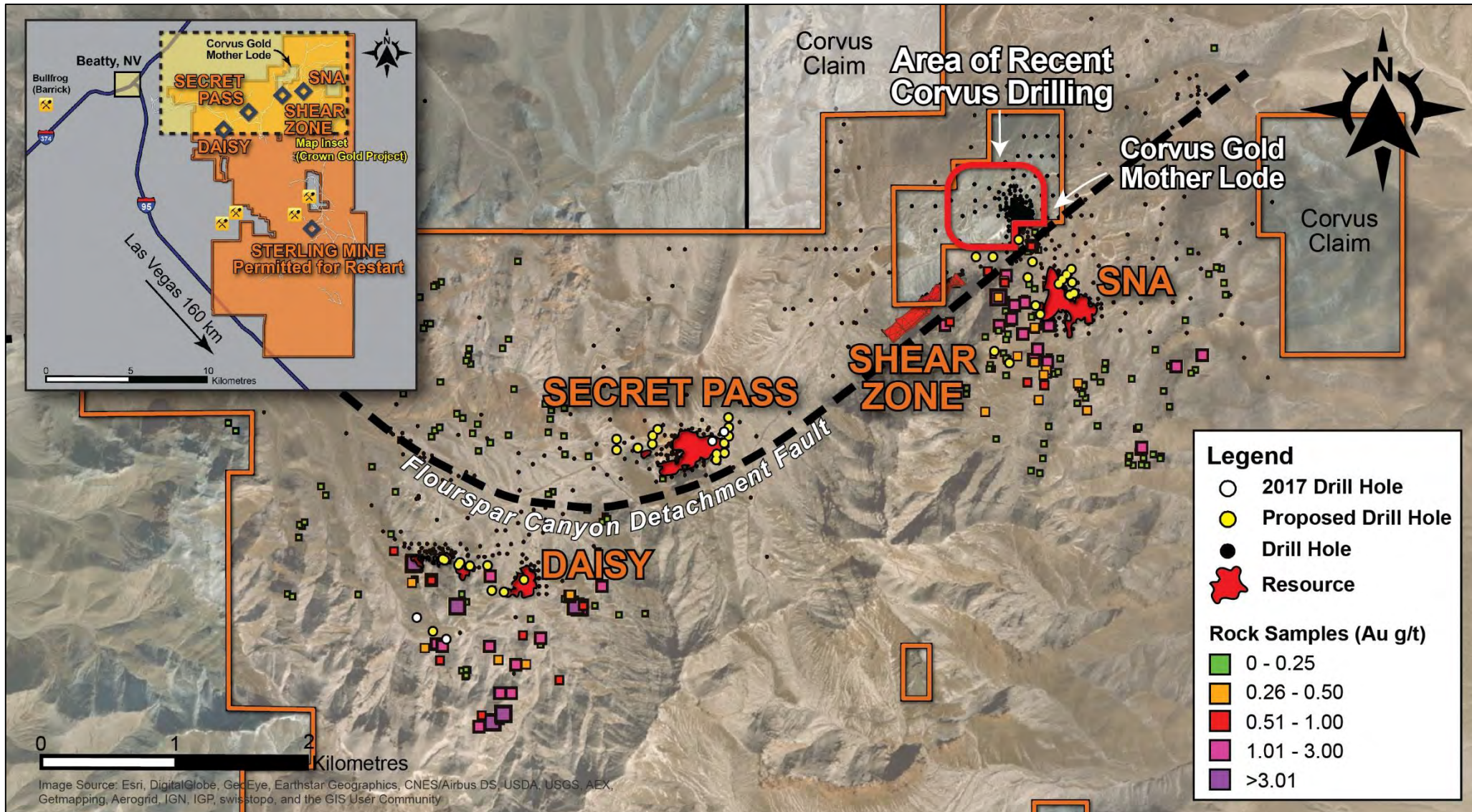
The Crown of Northern Empire



- Hosts three heap-leachable deposits
 - Daisy Deposit (past producer)
 - Secret Pass Deposit (past producer)
 - SNA Deposit
- 421 historic drill holes totaling over 61,500 m, mostly shallow and engineering-driven
- Mineralization follows east-west detachment fault structure that hosted the Bullfrog Mine (shown below in orange and gold)
- 'Plan of Operations' permit expected Q3 would allow for 200 hole/50,000 meter drill program



The Crown: Three Deposits Open for Expansion

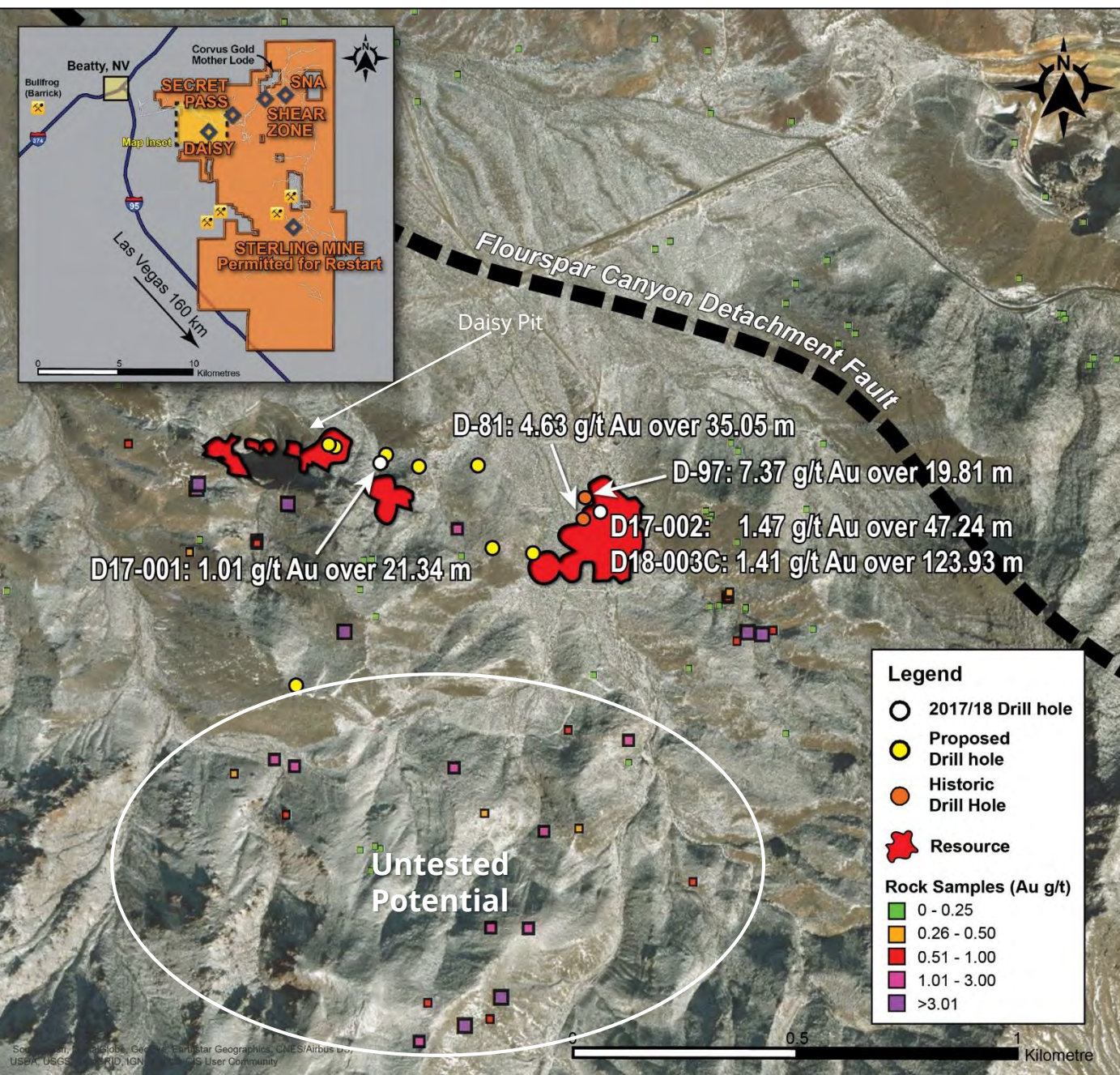


- Hosts inferred resource of 693,000 at 1.06 g/t gold
- Historical production of 104,000 oz of gold
- Included Daisy, Secret Pass and Mother Lode pits, now fully reclaimed
- Ceased production when gold declined from \$370 to \$260 /oz

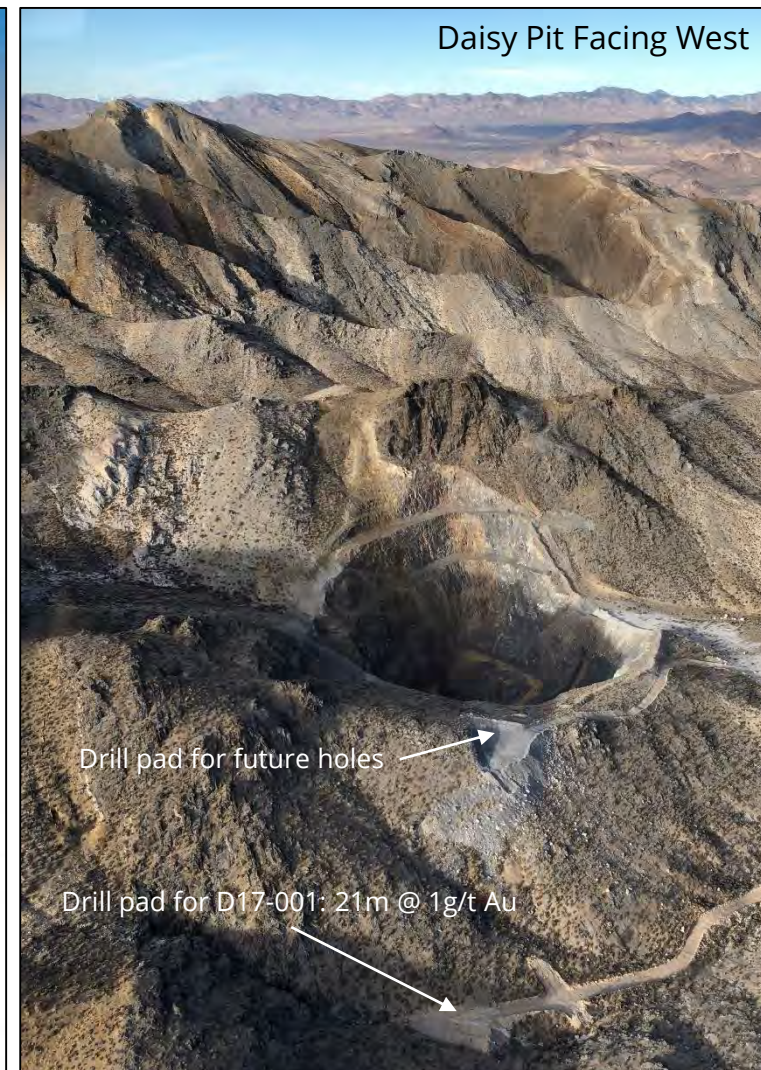
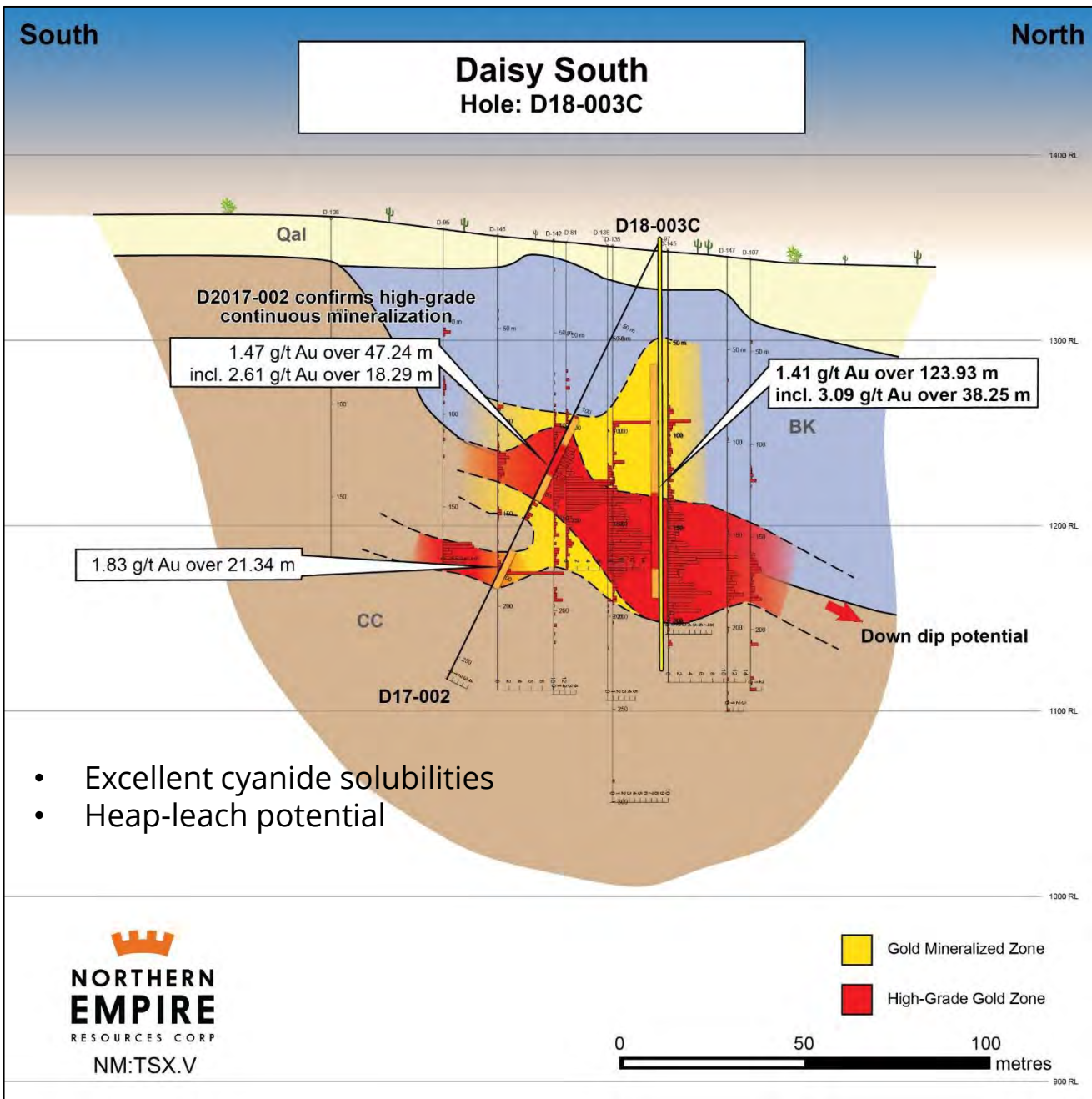
Daisy Exploration

- Carlin-type deposit open for expansion
- Several high-grade surface samples up to 15 g/t gold
- 10 Holes planned in 2018
- Hosts inferred resource of 232,000oz gold at 1.34g/t⁽¹⁾
- Drilling results
 - D18-003C: 125m @ 1.41 g/t Au
 - D17-001: 21m @ 1.0 g/t Au
 - D17-002: 47m @ 1.47 g/t Au
- Excellent Cyanide solubilities

1. Please see Resource Summary slide for disclosure relating to the key assumptions, parameters and methods used to estimate the Mineral Resources

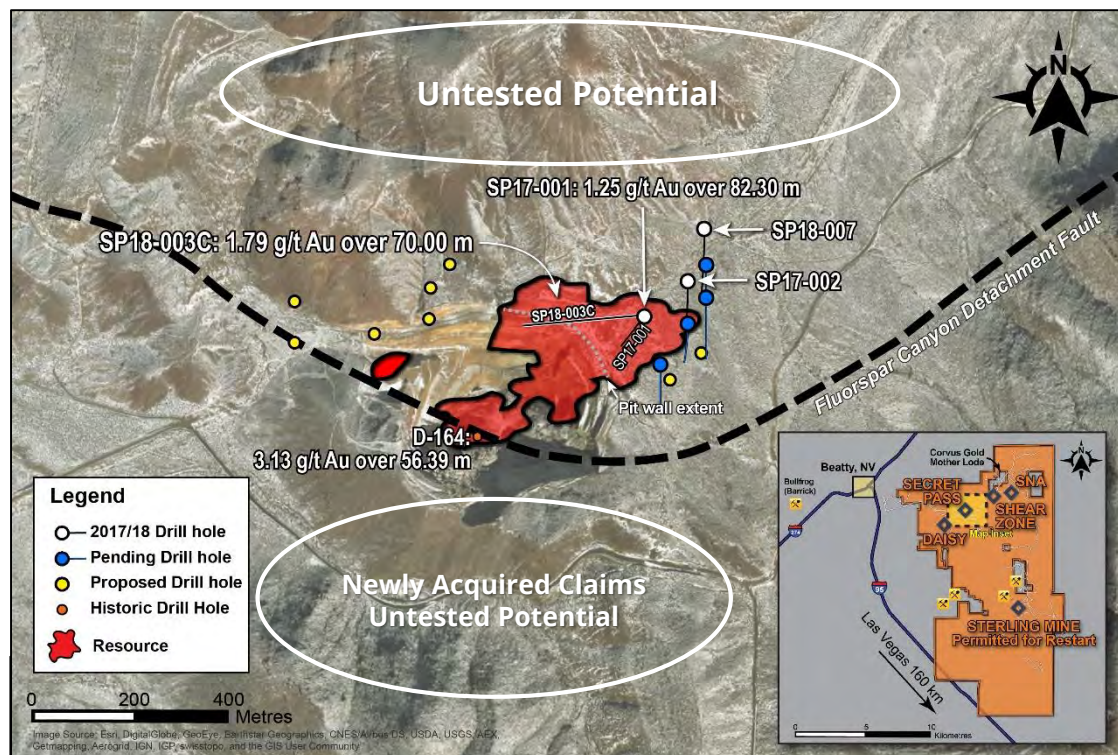


Cross Section D18-003C 121.93m of 1.41g/t



Secret Pass Exploration

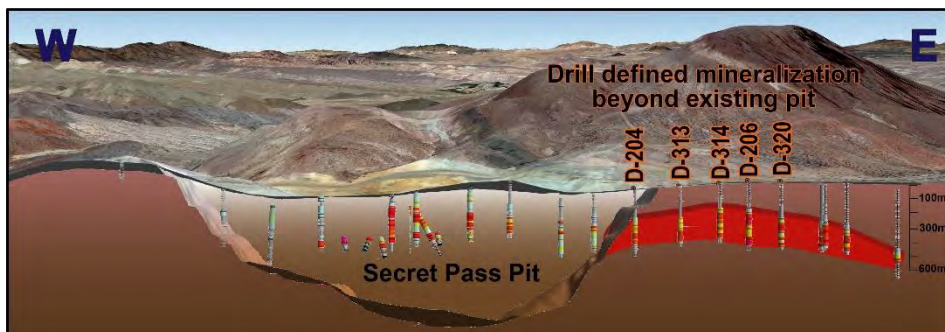
- Volcanic-hosted deposit with disseminated gold mineralization
- 2018 Drill Program (15 holes) – objective is to expand the resource laterally and at depth
- Significant drill intercepts beyond the existing pit indicate potential resource expansion
- Drilling Results:
 - SP17-001: 82m @ 1.26 g/t Au
 - SP17-002: 30.5 m @ 0.55 g/t Au
 - SP18-003C: 70.0m @ 1.79 g/t Au
 - D-164: 56.4m @ 3.13 g/t Au
- Hosts inferred mineral resource of 335,000oz at 0.93 g/t Au⁽¹⁾



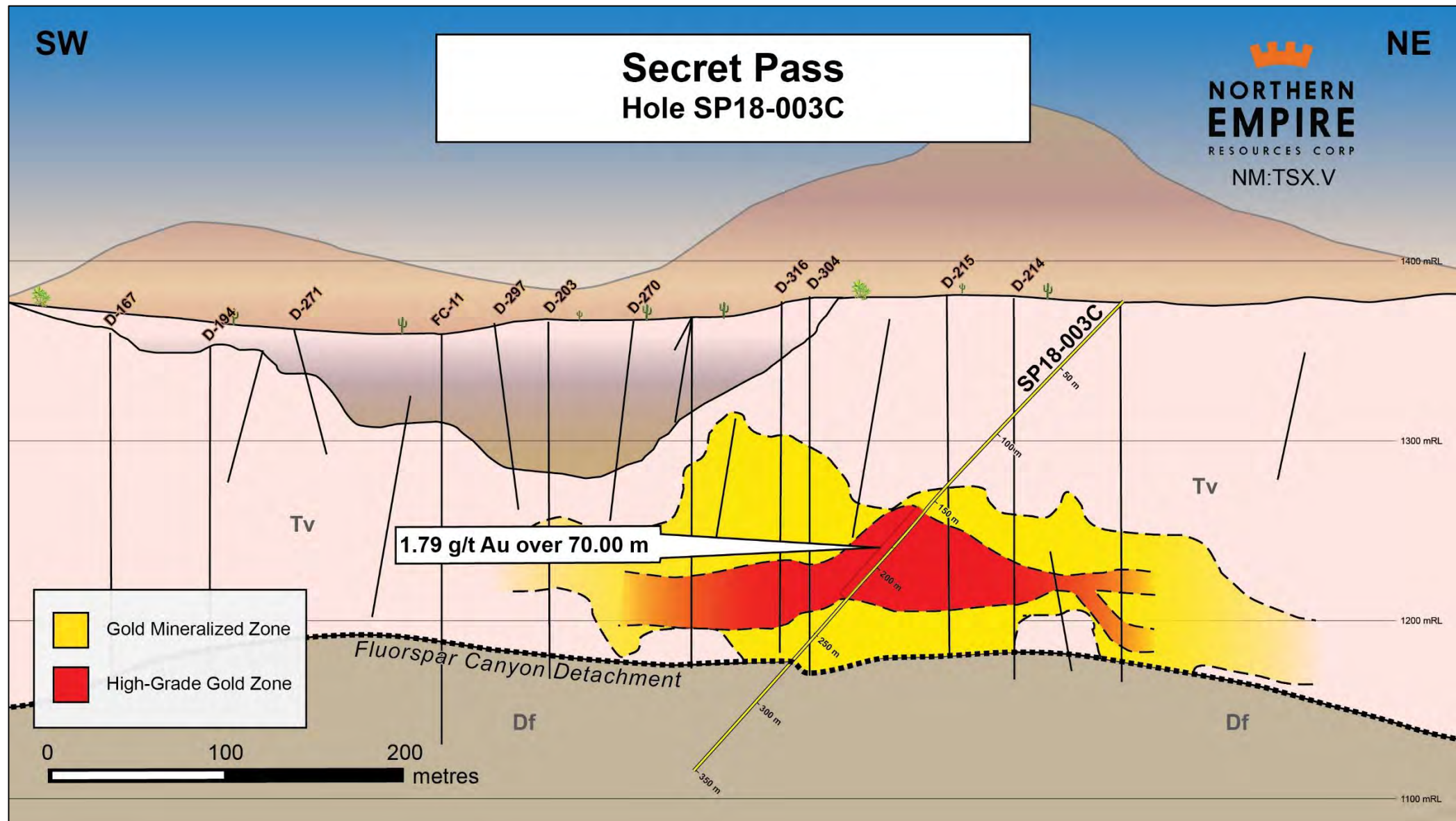
Secret Pass Pit – Facing West



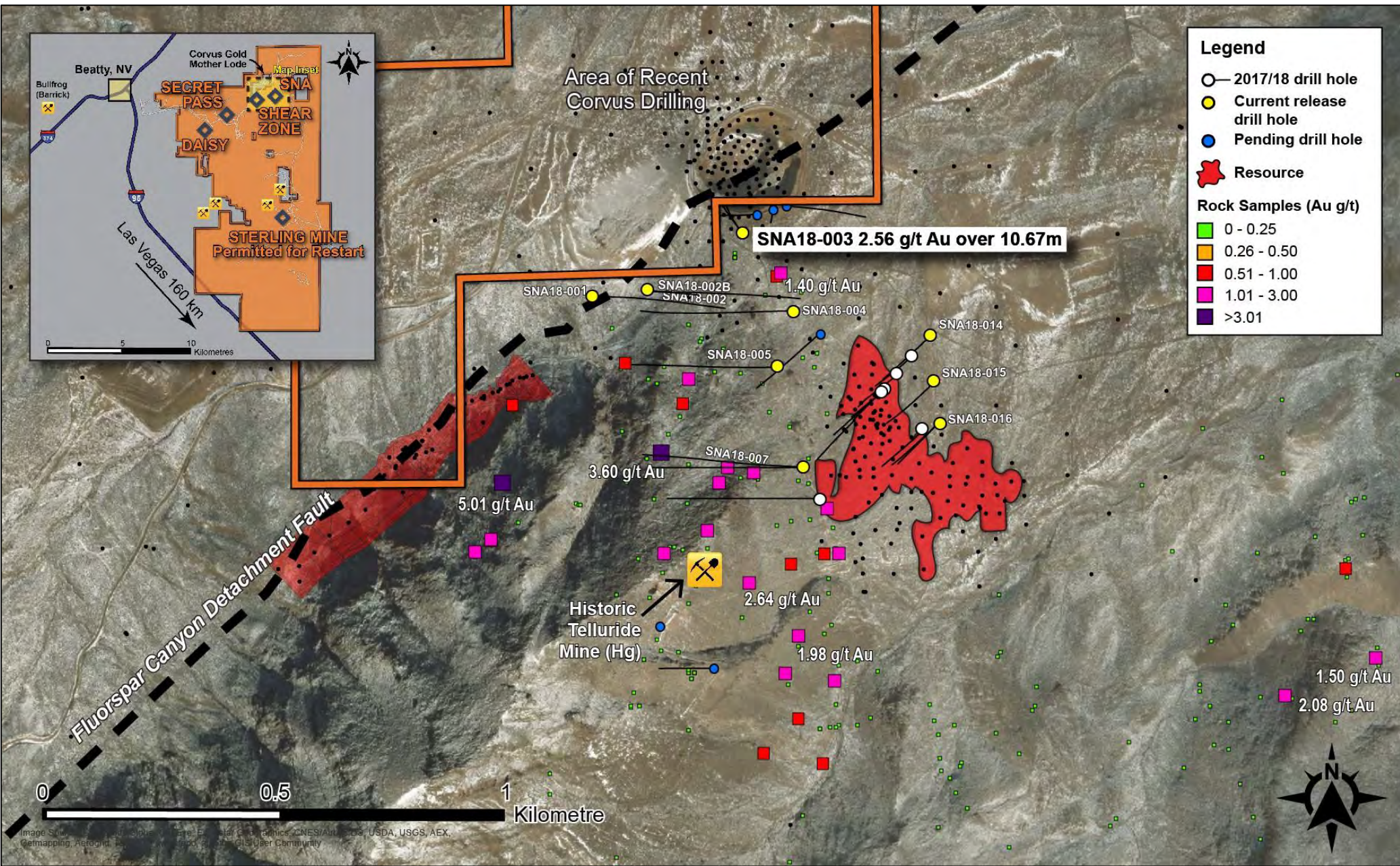
1. Please see Resource Summary slide for disclosure relating to the key assumptions, parameters and methods used to estimate the Mineral Resources



Cross Section SP18-003C 70m of 1.79g/t Au

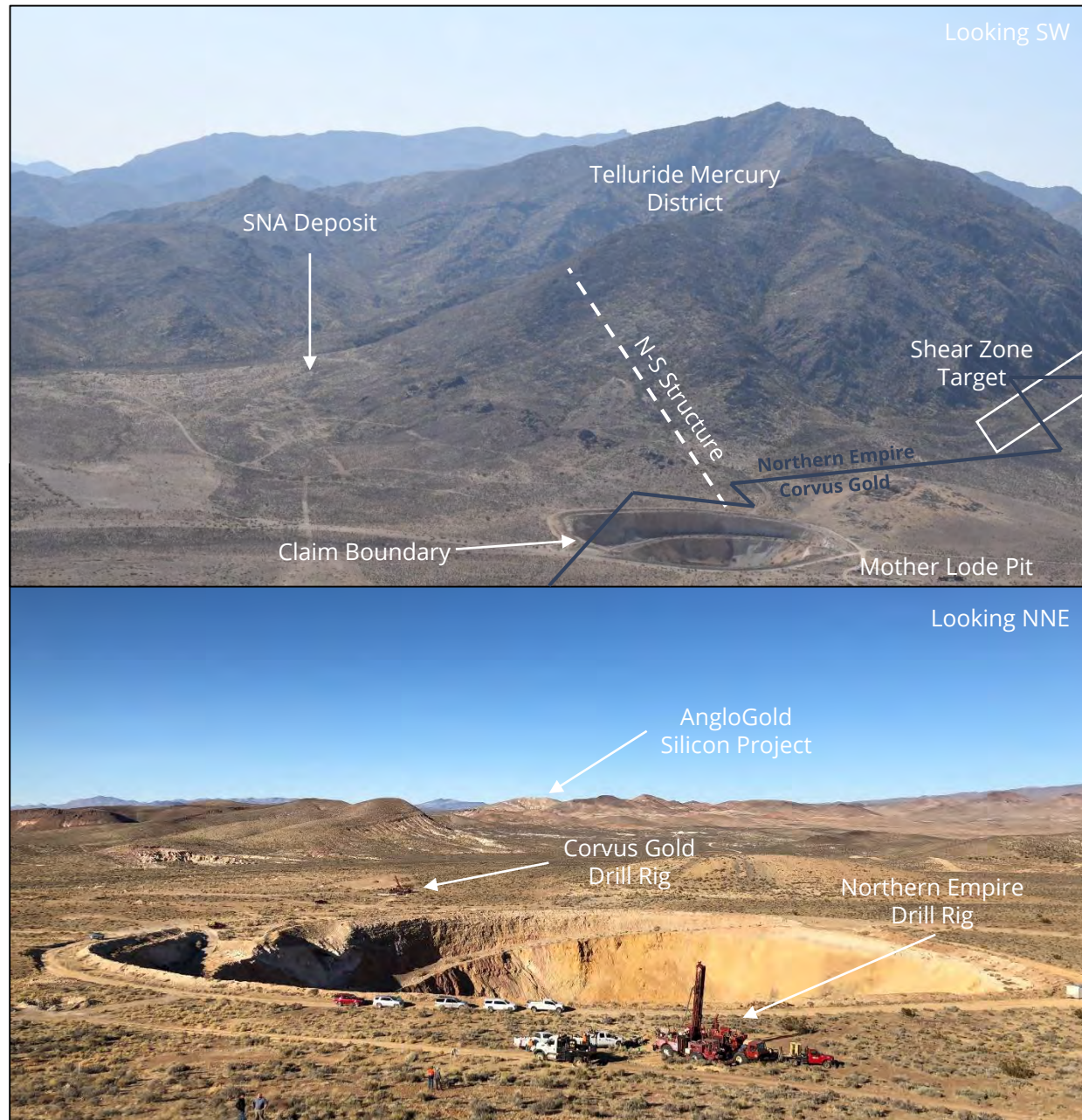


SNA Exploration



SNA Exploration – Carlin Signature

- SNA lies on NS structure that hosts Carlin-type mineralization and is open for expansion
- SNA hosts inferred mineral resource of 126,000oz at 0.93g/t Au⁽¹⁾
- Initial 2018 plans: 16 holes
- Several high-grade surface samples
- Surrounds Corvus Gold's Mother Lode discovery
- Within ~ 8m of claim boundary, Corvus drilling ML17-028 returned 51.8m of 1.86g/t including 19.8m of 3.43 g/t gold
- Four targets:
 - SNA resource expansion
 - Telluride mercury district
 - Mother Lode south
 - Jasperoid Anomaly



1. Please see resource summary slide for disclosure relating to the key assumptions, parameters and methods used to estimate the Mineral Resources

Go Forward Catalysts

- ✓ 1. 15,000m Drill Program Underway
- ✓ 2. Daisy: 124 meters @ 1.41 g/t Au
- ✓ 3. Secret Pass: 70 meters @ 1.79 g/t Au
- ✓ 4. SNA: 43 meters @ 0.82 g/t Au
- 5. Drilling Results from the Sterling Mine
- 6. Resource Update at the Sterling Mine
- 7. Metallurgical Work on all Deposits

